

BOTSWANA FLY-IN SPECIAL



From Maun to Victoria Falls, traverse the best of Botswana by light aircraft and enjoy the experience of a lifetime.

WWW.BOTSWANASAFARIS.CO.UK

WHAT'S INCLUDED:

All transfers between camps/lodges are included. Starting in Maun and ending in Victoria Falls. We personally meet all our guests at Maun Airport.

Okavango Delta - Oddballs Camp Includes:

- Accommodation • All Meals • Teas/ coffees and snacks • Laundry
- Activities • Government taxes and park fees

Oddballs Camp Excludes:

- Visa costs • Drinks • Travel Insurance • Items of personal nature

Chobe National Park - Bakwena Lodge Includes:

- Activities • All Meals • wine, beer, cider, soft drinks, water • Laundry • Accommodation • Government taxes, park fees, tourism levies and Chobe National Park fees

Bakwena Lodge Excludes:

- Visa costs • Spirits, premium whiskeys, and premium wines • Travel Insurance • Items of personal nature

Victoria Falls - 528 Boutique Hotel Includes:

- Bed and Breakfast • End transfer to Victoria Falls Airport



THE OKAVANGO DELTA

2023
Lelobu Safaris

Oddballs Camp

We will meet you at Maun Airport, introduce you to your pilot before you depart on an amazing 25min scenic flight to Oddballs Camp deep in the Okavango. Oddballs' Camp is situated on the edge of Chief's Island, deep in the heart of the Okavango Delta, and is the Okavango Delta's most affordable camp. All activities are led by men from the local communities

The area is known to be one of the most magnificent permanent water sites in the Delta. The camp is remote and offers a private safari experience with breathtaking views and sunsets. Oddballs' offers an extraordinary value-for-money experience in the Okavango Delta.



THE AREA

Famously, the Okavango Delta's unique and fragile ecosystems are known for extraordinary waters and a diverse collection of wildlife. Fed by the Okavango River, that flows from the Angola highlands, the annual flooding creates a yearly oasis throughout so many areas. As the largest inland delta in the world, the Okavango is home to a variety of animals, with an ecosystem so diverse that you can find grasslands, floodplains, savannas and forests throughout

The locations and views are spectacular with the classic flooding of the Okavango across the adjacent seasonal floodplains. For those keen on birdwatching, the combination of the wetlands and the drier Acacia and Mopane veldt provide a perfect habitat for a variety of aquatic species including Open Billed Storks, Hammerkops, Egrets, Ibis and forest/savannah dwellers including Raptors, Shrikes, Drongos, Sunbirds, Ground Hornbills and so on.



ABOUT ODDBALLS

The bar and lounge areas at Oddballs' Camp provide a great meeting place and somewhere to swap stories around the fire. There is a raised viewing deck that overlooks the sweep of the Delta – the perfect vantage point from which to watch the sun set over the palms and view whatever wildlife may be visiting.



ACCOMMODATION

Accommodation is in 3m x 3m canvas rooms (including two family units), thoughtfully created and set on elevated wooden decks shaded by the trees and canvas shelters. Beautiful outdoor showers and ablutions en-suite offer hot and cold running water for a traditional al-fresco bucket shower. A small deck offers a place to relax and view the stunning scenery



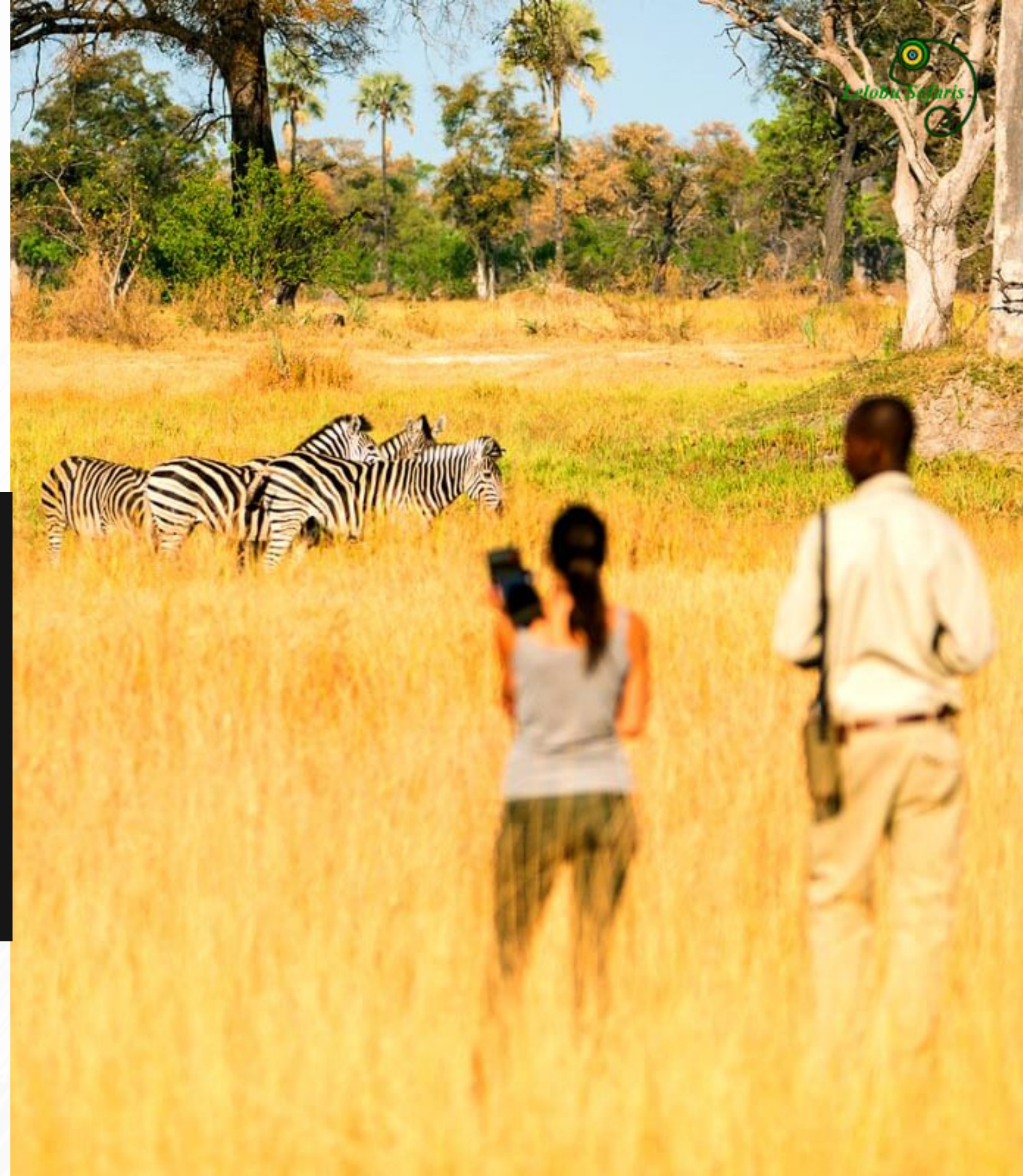
ACTIVITIES

Oddballs' Camp offers no motorized activities. Each guide has his own mokoro (pl. mekoro), (the genuine wooden article, not the plastic replica), in which he'll take you gliding through the Okavango to nearby islands, where he'll walk you through magnificent scenery to view game, birds, insects, medicinal plants, tracks, signs, droppings, and other fascinating natural phenomena.



ACTIVITIES

Oddballs' Camp is situated within a diverse habitat that includes an incredible variety of animals. Bird watching is excellent yearround, while the lagoons are home to bream, catfish and the feisty Tiger fish. Otters, honey-badgers, the shy pangolin, and a variety of the smaller wild cats such as civets, servals and genets are also seen on occasion in the Delta. Activities focus on offering guests a water-based experience and led by professional and knowledgeable guides who will accompany guests on all game activities. Activities are conducted by your own professional guide (a maximum of two guests per guide); a man who was born in the area and who lives in the local community.



CHOBE NATIONAL PARK

Bakwena Lodge

Another chartered flight from the Okavango will take you to Chobe Bakwena Lodge. Bakwena is an eco-luxury retreat on the banks of the Chobe River, located in the friendly town of Kasane right next to Chobe National Park, ideally positioned for the place where Zambia, Zimbabwe, Namibia, and Botswana meet.





THE AREA

A home of not only one of the largest elephant populations in Africa but a variety of other animals such as big cats, buffalo and zebra. The Chobe River is well known for its incredible scenery and wildlife that rely on it.

A boat cruise on the Chobe River is must do and allows for unique photographic moments where you are able to see wildlife at eye level as they walk to the banks.

With Kasane and various villages nearby, local communities have lived in harmony with the wildlife for generations. A Botswana safari with the Chobe National Park not only offers the chance for scenic and natural beauty, but also some cultural richness in such a unique part of the world.



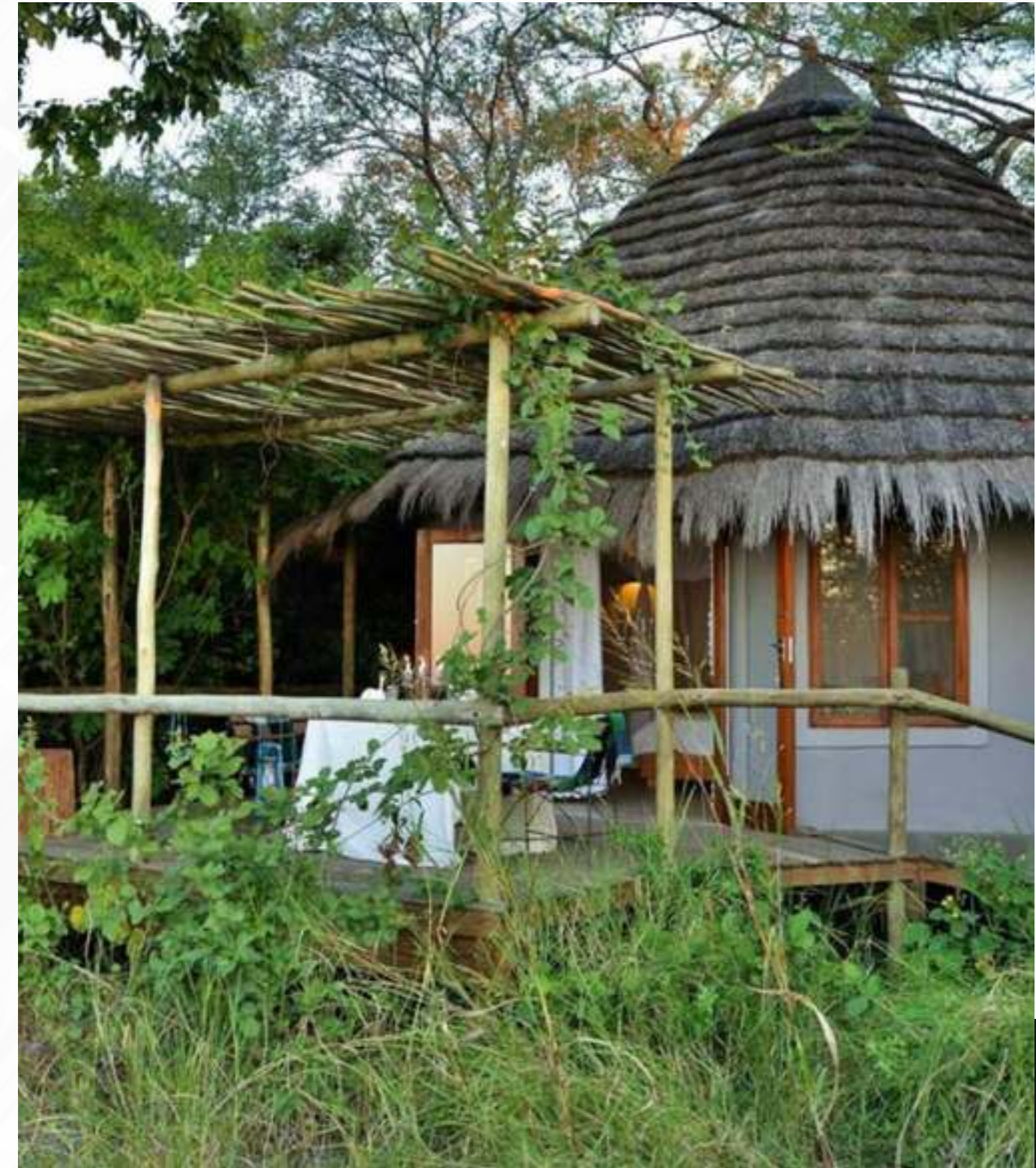
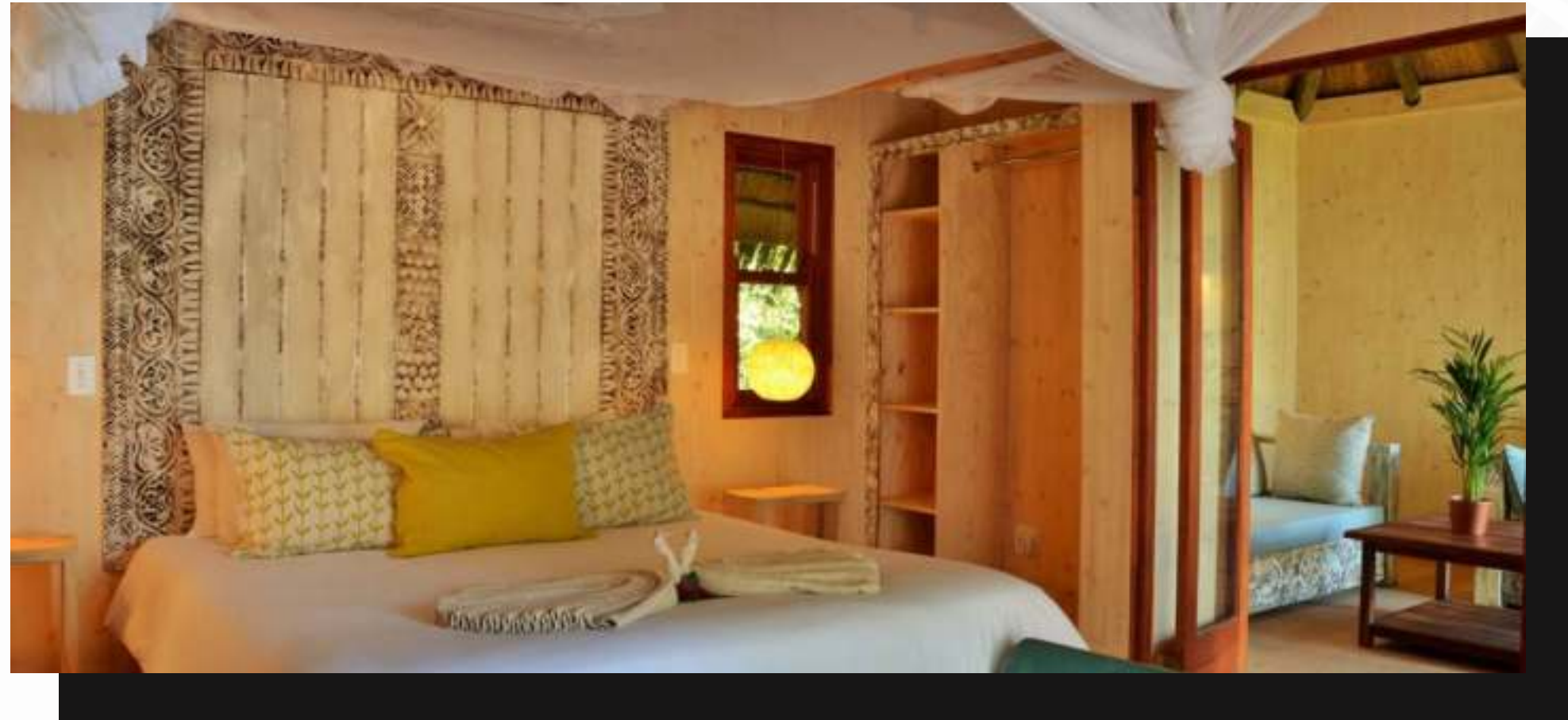
ABOUT CHOBE BAKWENA LODGE

This is where you want to go to for a truly heart-warming Botswana safari. The lodge is an oasis with excellent food (you will never forget their home-made bread), comfortable rooms, cosy nooks, and stunning views. But there is more: owners Jenny and Adam Young are deeply committed to responsible tourism and sharing their 'sanctuary' – as they like to call it – in the purest possible way.

Bakwena Lodge is the only lodge on the Chobe River that was constructed according to eco-principles, with locally sourced materials and without any harmful chemicals. When in your room, pay extra attention to the carefully hand-selected furniture, all sourced from local craftsmen and vintage stores. Even the curtains are fair trade; they come from Madagascar to create employment there and are made from local cotton. Come here to immerse yourself in local culture and enjoy a natural safari in a responsible lodge, oozing with African authenticity.

ACCOMMODATION

Bakwena Lodge comprises ten rondavel style chalets, two of which are family units. All situated under the shady canopy of Acacia trees, each site has been selected for its river view and is surrounded by indigenous riverine bush. As mentioned before, the chalets are built according to both ecological and traditional African principles. The chalets boast a laid-back kind of luxury, which immediately unwinds your body and mind, especially after taking an outdoor shower under the African night sky: an absolute must-do. Each chalet has an interior bathroom opening on to an outside garden with an outside shower.



ACTIVITIES

Chobe is home to Africa's largest elephant population. Every day, these magnificent pachyderms migrate from their foraging grounds in the Teak forests to the mighty Chobe to quench their thirst.

A game drive in the early morning offers the best opportunities to spot some of the sheer big cats (and don't worry, you will get up without grumbling with so much natural beauty awaiting you), while an afternoon boat cruise is still one of the most serene ways to gaze at wildlife. Watch elephants romping and rolling in the water or hippos showing off their pink bellies.

Besides drives and cruises, walking and biking (!) tours to the village are offered. Or, for the more adventurous, go on a walking safari in the nearby Lesoma valley or the surrounding forest reserves. To spot some impressive trees, venture out to Impalila Island and stand in awe before towering baobabs trees.



After all these activities, what could possibly be more satisfying than gathering around a crackling fire for a traditional 'boma' dinner? If you are lucky, they will serve traditional 'pap & wors': porridge and farmer's sausage. With a full belly and a full glass of wine, you will realise there is nothing left to wish for.

Instead of a game drive or boat cruise you may go on a guided bird walk at the Seboba Recreational Park, visit the Caracal World of Wildlife Centre, go fishing, or go on a Victoria Falls Day trip (excludes visa fee, fall entrance fee and lunch). You are also invited to go on a guided bicycle tour and village walk.





VICTORIA FALLS

528 Boutique Hotel

Next, a road transfer will take you from Chobe Bakwena Lodge across the Zimbabwe border and to Victoria Falls town. Based in the heart of Victoria Falls, in a quiet suburb close to all restaurants and activities, here you will find yourself at the intimate 528 Boutique Hotel.



THE AREA

One of Africa's most visited attractions, Victoria Falls is not only massive with the largest curtain of falling water in the world, but a hotspot for adventure. Traditionally Mosi-oa-Tunya (Smoke that Thunders), David Livingstone later identified the falls in 1855 with the colonial name after Queen Victoria.

Guided trips to the falls are very popular, with other activities ranging from white water rafting to scenic helicopter flights and visits to Devil's Pool. The natural wonder is also one of the few places in the world where it is possible to see a lunar Rainbow.



ABOUT 528

The unique architectural design of 528 is modern yet timeless. Wall carvings and murals decorate the hotel and are locally made by talented artisans in Zimbabwe. 528 greatly supports local talent and holds the belief that by doing so, they can truly reflect the area you are in.

The rooftop bar "Treetops" boasts spectacular views of the Zambezi and Zambia beyond. Relax after your day and enjoy an outstanding sunset with the emergence of Livingstone's lights and stars above.

A separate lounge and dining room have views of the leafy gardens and pool area. Along with the public areas, there are also many private areas to find and relax throughout the main building and gardens.

LOCATION

- 2.5km from Victoria Falls town.
- 3km from Victoria Falls waterfall.
- 20km from Victoria Falls Airport.

ACCOMMODATION

With just seven en-suite rooms (including two triple rooms), all are unique and have air-conditioning, tea and coffee facilities, hair dryers and safes.

The small size of the hotel allows for more personalized service from owners Paul and Meredith, with their close-knitted team.



AMENITIES

- Complimentary Wi-Fi.
- Air Conditioning
- Swimming Pool.
- In-room safes.
- In-room tea & coffee.
- Television in Central Bar.
- Hair dryer.
- International sockets.
- Bathroom amenities.
- Same day laundry.
- Daily turndown.
- Includes Breakfast.





END

We end the tour after a last heartwarming breakfast, with drop off at Victoria Falls Airport. in time for any flight you may have.