

# BOTSWANA EXPLORER



From Maun to Kasane, traverse the best of Botswana by light aircraft and enjoy the experience of a lifetime.

WWW.BOTSWANASAFARIS.CO.UK  
WWW.BOTSWANABUDGETSAFARIS.COM





## WHAT'S INCLUDED:

- All transfers between camps/lodges Starting in Maun and ending in Kasane. We personally meet all our guests at Maun Airport.
- Accommodation with all meals and beverages, (alcoholic and non-alcoholic) as well as daily laundry. Alcoholic beverages comprise of South African wines, beers and spirits.
- All game-viewing activities that are possible at that camp during that season.
- Emergency medical evacuation cover (all guests must have their own travel and health insurance).





# THE CENTRAL KALAHARI

## Tau Pan

Tau Pan is the first semi-permanent camp inside the Central Kalahari Game Reserve and offers truly incredible views from the elevated ridge of an ancient sand dune, an unusual experience in a land as flat as Botswana, and overlooks the famous Tau Pan - recognised for its stark beauty and remoteness. 'Tau' which means lion in Setswana, is so named for the pride of iconic black-maned Kalahari lions who frequent the camp (with a particular preference for the family tent!).





# THE AREA

Vast and remote, the Central Kalahari Game Reserve is located in the heart of Botswana. The reserve is not only one of the largest protected areas in Africa, but home to wildlife such as hyenas, and even rare black-maned lion.

During the rainy season (typically from November to April) the desert comes to life as the lushness of greenery attracts an abundance of animals. This leads to some incredible wildlife viewing opportunities for a Botswana safari. The area is also home to the San people, who have lived and survived in such harsh conditions for thousands of years.





# ABOUT TAU PAN

## NATURE AND CONSERVATION

Species that can be found in the Kalahari include oryx, the desert-adapted springbok, jackals, the rare brown hyena, red-crested Korhaan and herds of wildebeest.

Tau Pan has been constructed with the area's ecologies in mind. Utilizing only solar power for the generation of electricity, heating of water and pumping of water from deep under the Kalahari sands. Wastewater is treated in a state-of-the-art sewerage treatment plant and the fully treated water is returned to the sands from whence it came.

The main area of the camp is set around the fireplace, which is the ideal spot for game viewing down to the waterhole. A telescope is also provided for guests' use. The bar, lounge, curio shop and dining area all encircle the fireplace.



# ACCOMMODATION

9 environmentally adapted en-suite tents including 1 family tent are set on raised decks, affording the same spectacular views over the plains. Each has an indoor and outdoor shower, double-basin vanity, open wardrobe, King-sized double bed, living area and writing desk.







Designed and built to remain cool in the summer months and warm in winter. Each room is ensuite with a separate flushing toilet, double sinks and an inside and outside shower. The rooms are airy and spacious with large double or twin beds, a lounge area and a viewing deck that has amazing views of the wide-open spaces and beautiful big skies that this area possesses – truly special and captivating.





# ACTIVITIES

Game drives are operated using a guide and tracker, this adds to the experience on two levels. You have two sets of eyes searching out the action, looking for tracks – this ensures a good chance of sightings, especially predators. In addition, having the tracker concentrating on tracking means that the guide is more able to talk to guests, keep them informed and answer all their questions, it leads to a more relaxed, convivial game drive atmosphere.

As Tau Pan is within a national park we have to follow the park regulations. The area is ecologically sensitive and as such to drive at night or off road is not permitted. Day trips are offered to different areas of interest with the Central Kalahari Game Reserve such as Deception Valley and Pipers' Pan.





# ACTIVITIES

In addition to game drives Tau also offers informative nature walks with trackers who are all Bushmen from the Central Kalahari – a worthwhile experience. These nature walks offer a glimpse into the lives of the San Bushmen who used to live in a semi-nomadic manner, and is an interactive experience where the San share stories on how they used to hunt and gather, as well as their keen sense of being able to differentiate various plants and their uses.





# THE OKAVANGO DELTA

## Moremi Crossings

As you fly from the Central Kalahari over the Okavango Delta you can see the intricate twisting and turning of the waterways and the everchanging colours where dry land meets Delta.

Located near the most southern part of Chief's Island, Moremi Crossing is situated on a small palm fringed and treed island called Ntswi which is surrounded by the Moremi's game-rich seasonal floodplains.







# THE AREA

Famously, the Okavango Delta's unique and fragile ecosystems are known for extraordinary waters and a diverse collection of wildlife. Fed by the Okavango River, that flows from the Angola highlands, the annual flooding creates a yearly oasis throughout so many areas. As the largest inland delta in the world, the Okavango is home to a variety of animals, with an ecosystem so diverse that you can find grasslands, floodplains, savannas and forests throughout.

One truly special aspects of the Okavango Delta is that it is home to the world largest population of endangered African wild dogs. A rare but special sight when found. Another highlight of any Botswana safari, is exploring the waterways and hippo channels by traditional mokoro. This dug-out canoe is not only a cultural way for the local people to travel between such remote areas, but also a unique way to get a closer look at animals quietly and without disturbing them in their natural habitat.

The locations and views are spectacular with the classic flooding of the Okavango across the adjacent seasonal floodplains. For those keen on birdwatching, the combination of the wetlands and the drier Acacia and Mopane veldt provide a perfect habitat for a variety of aquatic species including Open Billed Storks, Hammerkops, Egrets, Ibis and forest/savannah dwellers including Raptors, Shrikes, Drongos, Sunbirds, Ground Hornbills and so on.





# ABOUT MOREMI CROSSINGS

In contrast to the northern Okavango Delta where the waters are fast-flowing and the channels and view is enclosed by high reeds and papyrus, the channels around Moremi Crossing offer far reaching vistas of the Moremi's floodplain, grasslands and marginal woodlands interspersed with Mokolwane palm islands.

The central dining area houses a large open plan deck that has spectacular views over the Boro River onto Chief's Island. This half-moon shaped area is built on different levels to give a spacious feel. The dining room, bar and lounge is covered by a large, thatched roof that hugs the ancient riverine tree line. The whole camp is shaded by magnificent Llala Palms, Giant Ebony, Mangosteen, Sausage and Giant Fig trees.



# ACCOMMODATION

Accommodation consists of 16 en-suite and spacious tents on raised decks, each with their own veranda overlooking Chief's Island. Tents have their own eco-friendly outdoor shower heated by solar power. We have both a Family Tent sleeping four (2 adults and 2 children) and a Honeymoon Tent with an outdoor bath.









# ACTIVITIES

Moremi Crossings activities may be seasonal dependent as the camp relies on the ever changing landscape of the Okavango Delta



**Game Drives**



**Mokoro Excursions**



**Boat Cruises**



# ACTIVITIES



Time slows down at Moremi Crossing, whilst on foot or silently moving through the Delta's waterways on mokoro, in search of game. Through the provision of high-quality guiding services and custom-made boats, Moremi Crossing offers a more personalized wildlife experience.

Become part of the bustling river life along the papyrus clad banks of the Okavango Delta. Explore the wilderness with our game drives, guided bush walks, or sit back and absorb the scenery from a traditional 'mokoro' canoe. Another great way to explore the crystal-clear channels of the Boro River is by motorboat. Watch the sun set while drifting along a lagoon and sipping on sundowners. For the adventurous, we also offer a rustic island camping experience



# CHOBE NATIONAL PARK

## Bakwena Lodge

Another chartered flight from the Okavango will take you to Chobe Bakwena Lodge. Bakwena is an eco-luxury retreat on the banks of the Chobe River, located in the friendly town of Kasane right next to Chobe National Park, ideally positioned for the place where Zambia, Zimbabwe, Namibia, and Botswana meet.







# THE AREA

A home of not only one of the largest elephant populations in Africa but a variety of other animals such as big cats, buffalo and zebra. The Chobe River is well known for its incredible scenery and wildlife that rely on it.

A boat cruise on the Chobe River is must do and allows for unique photographic moments where you are able to see wildlife at eye level as they walk to the banks.

With Kasane and various villages nearby, local communities have lived in harmony with the wildlife for generations. A Botswana safari with the Chobe National Park not only offers the chance for scenic and natural beauty, but also some cultural richness in such a unique part of the world.





# ABOUT CHOBE BAKWENA LODGE

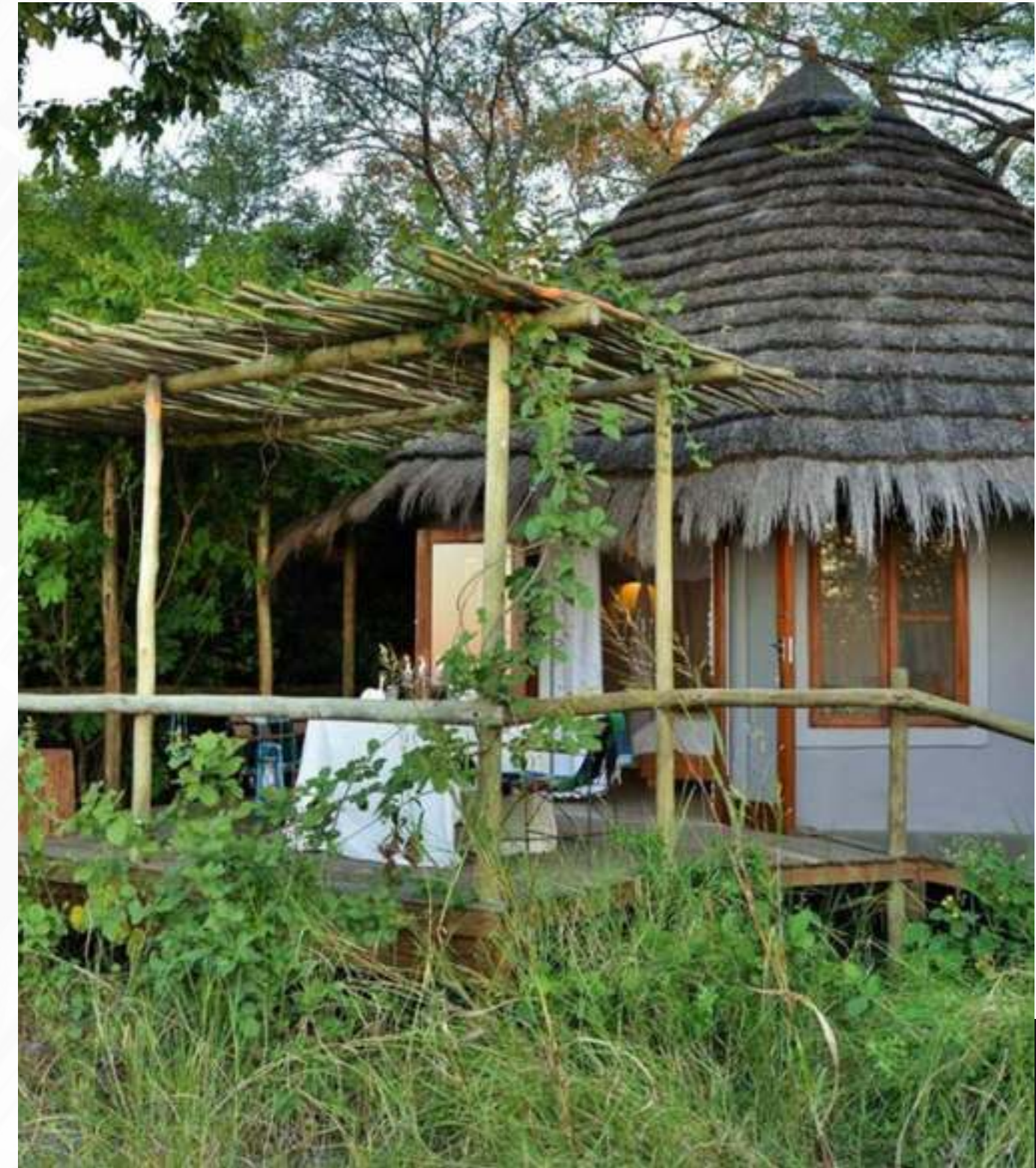
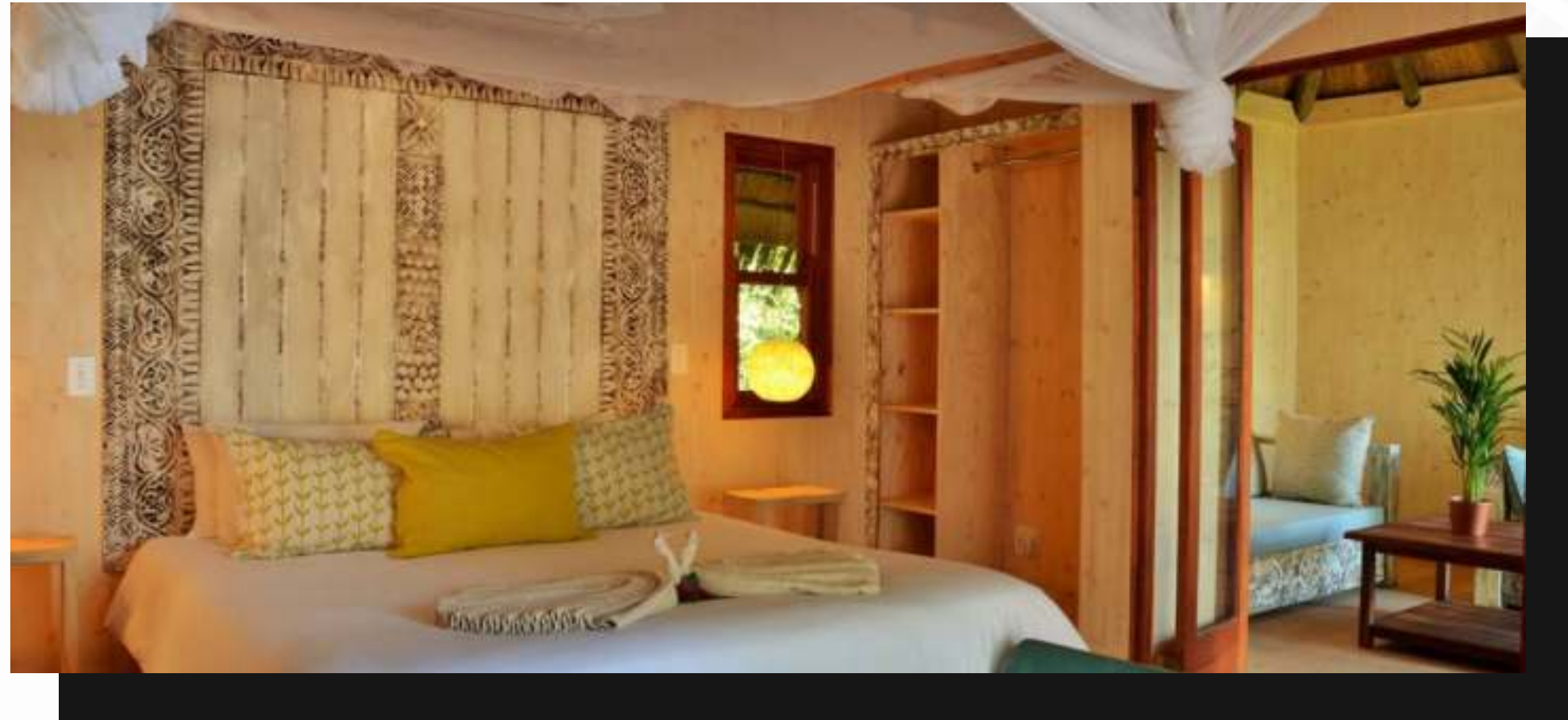
This is where you want to go to for a truly heart-warming Botswana safari. The lodge is an oasis with excellent food (you will never forget their home-made bread), comfortable rooms, cosy nooks, and stunning views. But there is more: owners Jenny and Adam Young are deeply committed to responsible tourism and sharing their 'sanctuary' - as they like to call it - in the purest possible way.

Bakwena Lodge is the only lodge on the Chobe River that was constructed according to eco-principles, with locally sourced materials and without any harmful chemicals. When in your room, pay extra attention to the carefully hand-selected furniture, all sourced from local craftsmen and vintage stores. Even the curtains are fair trade; they come from Madagascar to create employment there and are made from local cotton. Come here to immerse yourself in local culture and enjoy a natural safari in a responsible lodge, oozing with African authenticity.



# ACCOMMODATION

Bakwena Lodge comprises ten rondavel style chalets, two of which are family units. All situated under the shady canopy of Acacia trees, each site has been selected for its river view and is surrounded by indigenous riverine bush. As mentioned before, the chalets are built according to both ecological and traditional African principles. The chalets boast a laid-back kind of luxury, which immediately unwinds your body and mind, especially after taking an outdoor shower under the African night sky: an absolute must-do. Each chalet has an interior bathroom opening on to an outside garden with an outside shower.





# ACTIVITIES

Chobe is home to Africa's largest elephant population. Every day, these magnificent pachyderms migrate from their foraging grounds in the Teak forests to the mighty Chobe to quench their thirst.

A game drive in the early morning offers the best opportunities to spot some of the sheer big cats (and don't worry, you will get up without grumbling with so much natural beauty awaiting you), while an afternoon boat cruise is still one of the most serene ways to gaze at wildlife. Watch elephants romping and rolling in the water or hippos showing off their pink bellies.

Besides drives and cruises, walking and biking (!) tours to the village are offered. Or, for the more adventurous, go on a walking safari in the nearby Lesoma valley or the surrounding forest reserves. To spot some impressive trees, venture out to Impalila Island and stand in awe before towering baobabs trees.





After all these activities, what could possibly be more satisfying than gathering around a crackling fire for a traditional 'boma' dinner? If you are lucky, they will serve traditional 'pap & wors': porridge and farmer's sausage. With a full belly and a full glass of wine, you will realise there is nothing left to wish for.

Instead of a game drive or boat cruise you may go on a guided bird walk at the Seboba Recreational Park, visit the Caracal World of Wildlife Centre, go fishing, or go on a Victoria Falls Day trip (excludes visa fee, fall entrance fee and lunch). You are also invited to go on a guided bicycle tour and village walk.







# END

We end the safari with drop off at Kasane Airport. Or if you would like to combine a few nights in Victoria Falls, we would be happy to assist and continue your adventure!